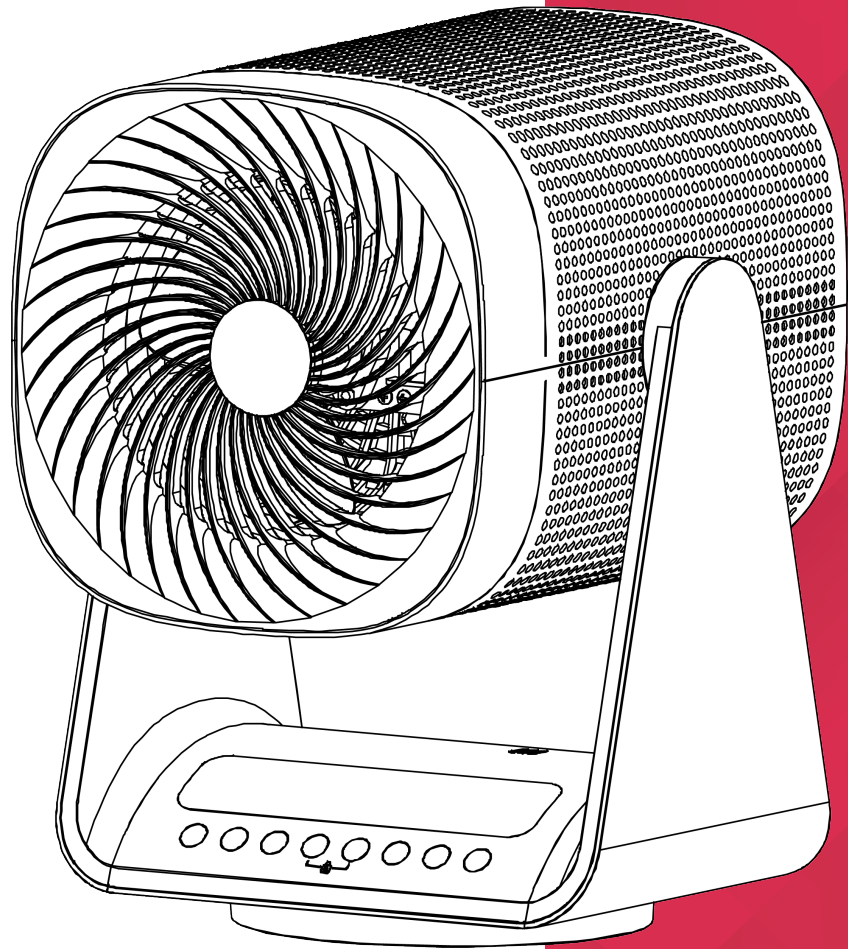




INSTRUCTION MANUAL



DC Air Circulator + Purifier

Model: DCACP23

For domestic household use only.



IMPORTANT

THESE INSTRUCTIONS SHOULD BE READ CAREFULLY AND RETAINED FOR FUTURE REFERENCE.

Note also the information presented on the appliance

CAUTION: FAILURE TO FOLLOW THESE INSTRUCTIONS MAY CAUSE INJURY AND/OR DAMAGE AND MAY INVALIDATE YOUR WARRANTY

Please read the operating instructions carefully before using your air circulator for the first time and keep them in a safe place.

WARNING – This appliance must not be used in a bathroom.

WARNING – Do not use this appliance in the immediate surroundings of a bath, a shower or a swimming pool.

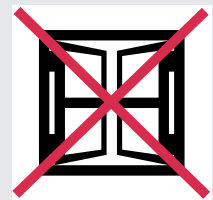
- If the charger or supply cord is damaged it must only be replaced by the manufacturers service agent or a similarly qualified person in order to avoid a hazard.
- This appliance is not intended for use by persons (including children) with reduced physical, sensory or mental capabilities, or lack of experience and knowledge, unless they have been given supervision or instruction concerning use of the appliance by a person responsible for their safety.
- Children should be supervised to ensure they do not play with the appliance.
- Prior to cleaning or other maintenance, the appliance must be disconnected from the supply mains.
- Never immerse the appliance in water or other liquids.
- Do not place on soft, unstable or non-horizontal/angled surfaces.
- Never operate the appliance if a cable or connector has been damaged, after appliance malfunction or if the appliance was dropped or is otherwise damaged.
- Please ask a professional service agent to repair the product. Improper repair may cause danger to users.
- Disconnect the appliance from mains power whenever it is not in use, before relocating it, and before cleaning.
- Operate the appliance only at the voltage specified on the rating label.
- Only connect the unit to a properly installed and easily accessible socket so that you can quickly disconnect the plug if necessary.
- This air circulator should not be used for commercial or industrial or leisure applications or in small enclosed spaces.
- Never use the mains lead as a carrying strap or pulling lead.
- To avoid a fire or electrocution hazard, **NEVER** put the cord near heat registers, radiator, stoves or heaters.
- **DO NOT** cover cord with carpeting, throw rugs, runners, or similar coverings.
- **DO NOT** route cord under furniture or appliances. Take care to position the cord away from traffic areas and where it will not be a tripping hazard.
- **DO NOT** use the unit near windows or where water collects. Rain and water collection may lead to a risk of fire or electric shock.
- **WARNING** - To avoid danger of suffocation please remove all packaging materials particularly plastic and EPS and keep these away from vulnerable people, children and babies.

- **NEVER** drop or insert any object or fingers into any openings.
- Do not use the appliance in locations where paint, petrol or other flammable liquids are used or stored.
- Do not use bug sprays or other flammable cleansers/vapour sprays on or around the unit.
- Always switch off the unit and take the plug out of the socket:
 - If you are not using the unit
 - Before you clean or carry out maintenance on the unit
 - If a fault occurs
 - In the event of an electrical storm.
- Avoid electromagnetic interference. Keep the unit at least 1 metre away from electrical appliances such as televisions & radios.
- Use this appliance on a horizontal and stable surface.
- Children shall not plug in, regulate and clean the appliance or perform user maintenance.
- **DO NOT** incinerate the fan and its' battery even if severely damaged. This may cause a fire.
- **DO NOT** disassemble and replace components of the fan randomly. In the case of failure, contact the after sales service department.
- Only use the detachable power supply unit with this product.
- **DO NOT** use this appliance with an extension lead or power board.

WARNING - KEEP BATTERIES OUT OF REACH OF CHILDREN

- Swallowing may lead to serious injury in as little as 2 hours or death, due to chemical burns and potential perforation of the oesophagus.
- If you suspect your child has swallowed or inserted a button battery immediately call the 24-hour Poisons Information Centre on 13 11 26 (in Australia) or 0800 764 766 (in New Zealand) for fast, expert advice.
- Examine devices and make sure the battery compartment is correctly secured, e.g. that the screw or other mechanical fastener is tightened. Do not use if the compartment is not secure.
- Dispose of used button batteries immediately and safely. Flat batteries can still be dangerous.
- Do not ingest battery, Chemical Burn Hazard.
- This product contains a coin/button cell battery. If the coin/button cell battery is swallowed, it can cause severe internal burns in just 2 hours and can lead to death.
- Keep new and used batteries away from children.
- If the battery compartment does not close securely, stop using the product and keep it away from children. If you think batteries might have been swallowed or placed inside any part of the body, seek immediate medical attention.
- The batteries contain materials, which are hazardous to the environment; they must be removed from the appliance before it is scrapped and they are disposed of safely.





Exposed to the weather outdoors



Near water



If the power cable wires are frayed or cut



Where small children may be left unattended



No extension leads or power boards



Where the power cable may be damaged



On a slope or uneven surface



Where there is risk of fire or close to a naked flame



Where it may be damaged by chemicals



Where there is a risk of interference by foreign objects



This product is not made for DIY repair



If there is a risk of water falling on the unit

Specification

Model no.	DCACP23
Power supply	220-240V~, 50Hz
Rated power	35W
Speed settings	3
Timer	24 hour
Air speed	5m/s
Oscillation	80°
Tilt Head	90°
Noise level (MAX)	55dB(A)
Weight (net)	3.3kg
Dimensions (w x d x h)	268 x 234 x 422mm
Filter	HEPA-13

- For greater precision, please always refer to the rating label placed on the product.

How It Works

In contrast to a traditional fan which brings only cooling benefits when directly facing you; an air circulator works for any season, keeping the air in motion and making the entire room more comfortable to be in.

This jet stream helps maintain a constant room temperature by ridding the room of cold and warm spots. It also clears stuffy atmospheres by circulating stale air with fresh air from an open window.

Air circulators are the safe, all-year-round temperature regulation solution you've been looking for.

Where To Position

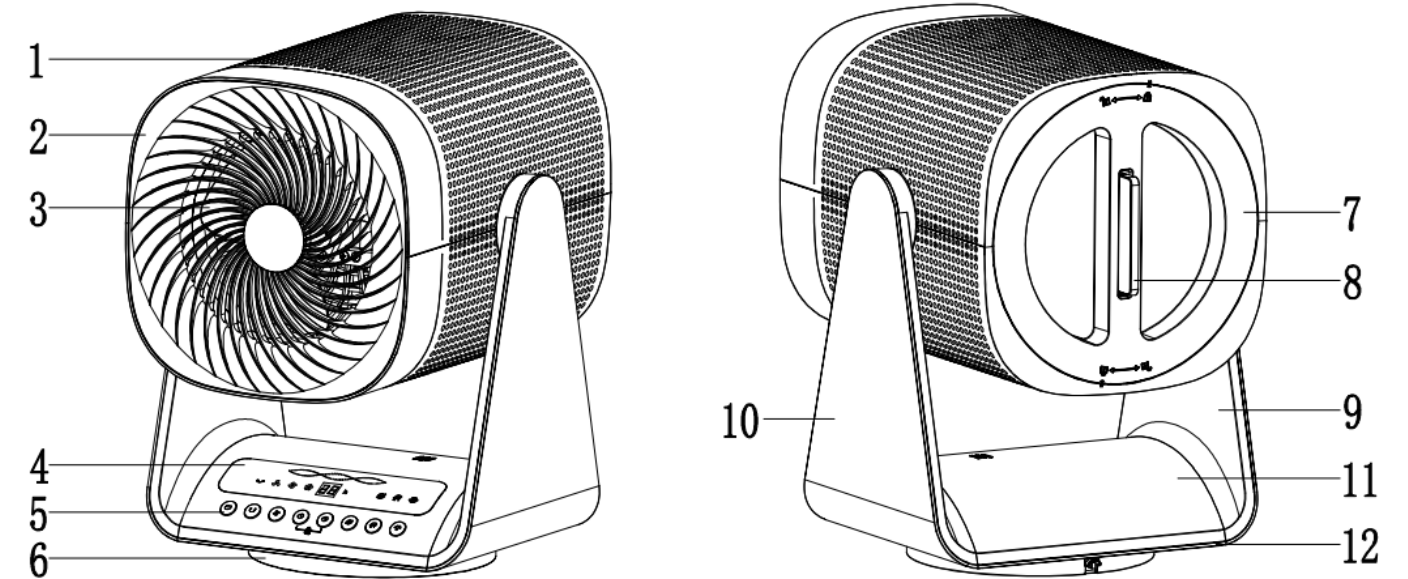
During Summer, pointing the air circulator towards a wall halfway between the floor and the ceiling, as well as using the highest setting, will set up a high speed air circulation pattern.

This will cool down the room in an efficient manner. Pointing towards your air conditioner will help distribute the cool air faster, saving time and energy; essentially Turbo boosting your A/C.

During Winter, the use of a heater alone produces warm air that rises naturally to the ceiling.

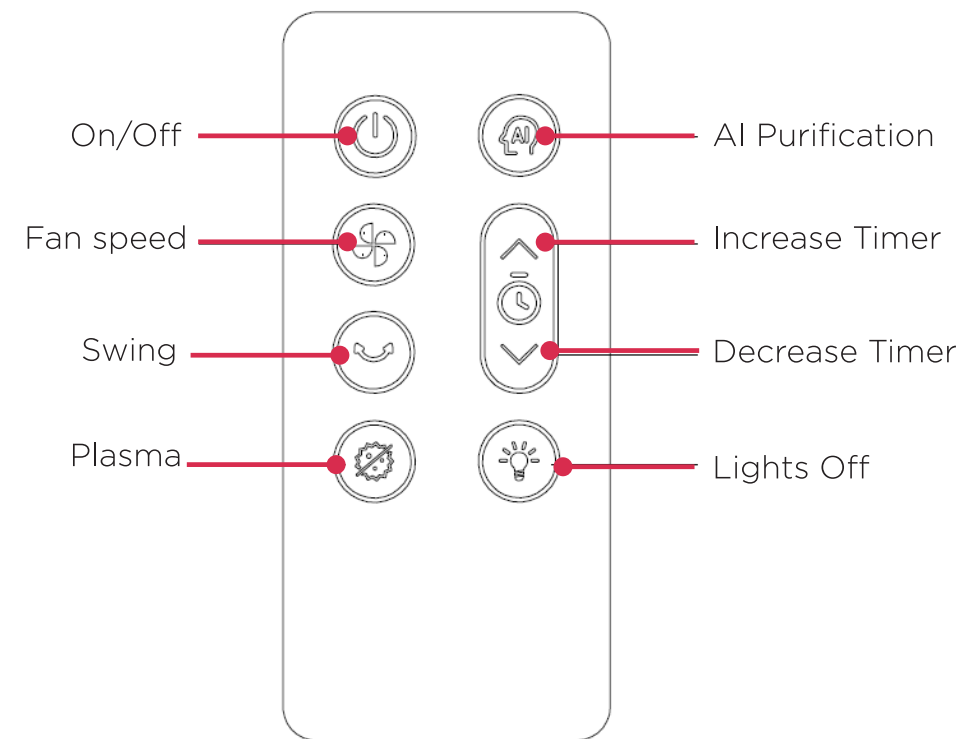
By pointing the air circulator upwards, and utilising the lowest speed setting, the hot air will circulate with the cooler air near the floor, resulting in a more even room temperature.

Parts

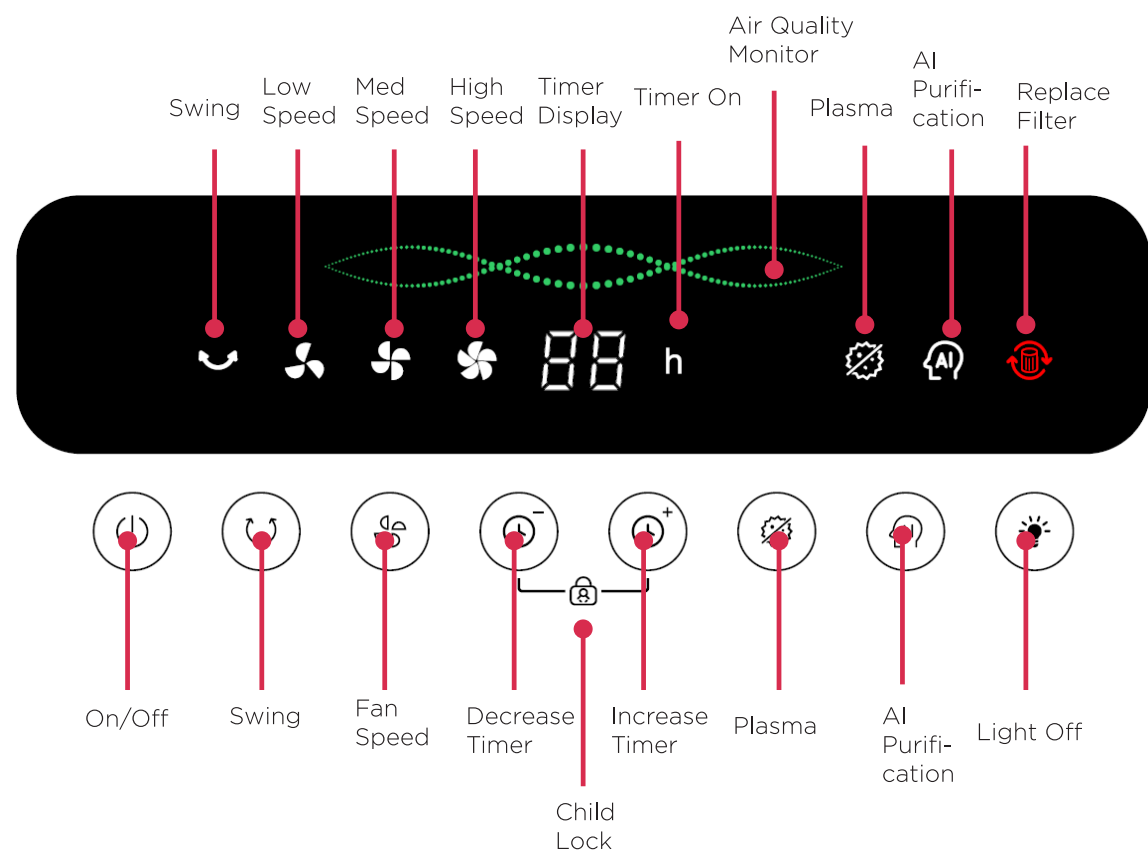


1	Fan Body Grille
2	Front Grille
3	Fan Blades
4	Display Panel
5	Control Panel Buttons
6	Bottom Cover
7	Back Cover
8	Remote Control Holder
9	Swing Bracket
10	Swing Bracket Cover
11	Base Cover
12	Base

Remote Control

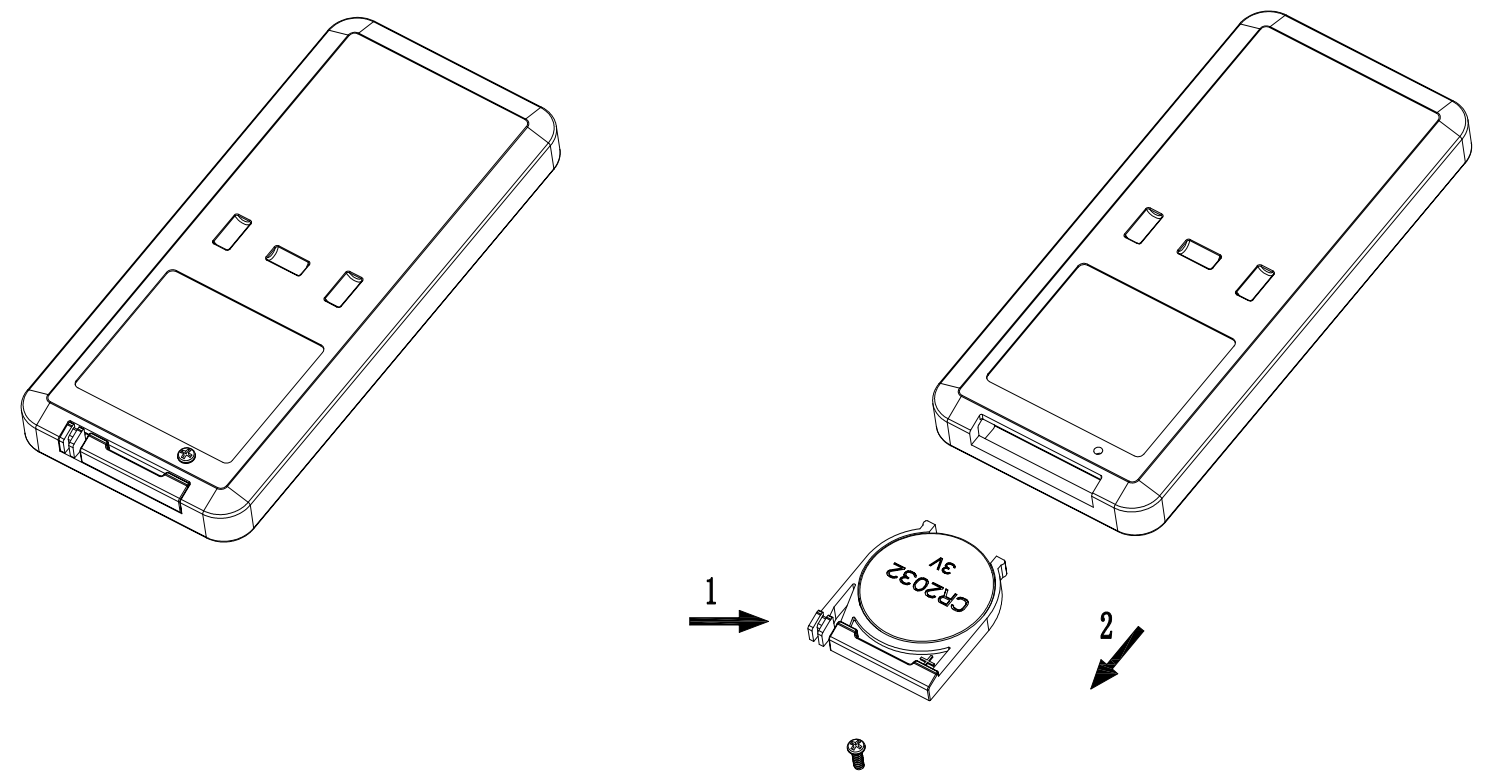


Control Panel



Usage of Remote Control

1. Unscrew the screw on the back of the remote.
2. To open the battery cover, press and hold in the direction of arrow 1 to release the upper snap, and then pull it out in the direction of arrow 2 as per shown below.
3. Install 1x CR2032 3V battery in the slot. Close the cover, and place the screw back in the hole.
4. When using the remote, please align to the position of the receiver.
5. When the power of the battery is depleted, open the battery cover as per the directions above, and replace with a new CR2032 3V battery.



Operation

Note: Please remove the plastic bag from the HEPA filter before turning on the device.

ON/OFF

After the device is plugged in to a power supply, press the **ON/OFF** button to turn the unit on. The default state the device will enter is low wind speed, with display panel and other functionality off. Press this button again to switch the device off.

SWING

Press the **SWING** button to enable or disable the units horizontal swing functionality. When this function is turned on, the **SWING** LED logo will be shown on the display panel. When switched off, this will disappear.

FAN SPEED

Press the **FAN SPEED** button to adjust the speed of the fan. The unit has 3 fan speeds being low, medium and high, and adjusts in the following sequence: Low-Medium-High-Low etc. The corresponding logo on the display panel will light up depending on the speed.

TIMER

Press **INCREASE TIMER** or **DECREASE TIMER** buttons to turn the timer function on. When this is turned on, the 'h' logo on the display panel lights up. Press the **INCREASE TIMER** button to increase the timer one hour at a time. Press the **DECREASE TIMER** button to reduce the timer one hour at a time. The timer can be set for up to 24 hours. By pressing either button for over 2 seconds, you can set your desired time quicker.

PLASMA

Press the **PLASMA** button to enable or disable the plasma functionality. This works to remove germs and antigens from the air. When this is on, the **PLASMA** logo will show on the display panel. When switched off, this will disappear.

AI PURIFICATION

Press the **AI PURIFICATION** button to enable or disable the AI Purification functionality. When switched on, the unit will take 60 seconds to detect the air quality. In this period, the LED Air quality Monitor on the display panel will flash between green, yellow and red and run on high fan speed. After 60 seconds, the LED display will settle on the determined colour and the fan speed will automatically alter with the detected air quality. When the air quality is good, the LED display will be green and the device will run on low wind speed. When the air quality is medium, the LED display will be yellow and the device will run on medium wind speed. When the air quality is poor, the LED display will be red and the device will run on high wind speed.

LIGHTS OFF

Press the **LIGHTS OFF** button to turn all indicator lights off on the device. If you would like the lights to turn back on, press any button besides the **ON/OFF** button and all indicator lights will turn on again.

Operation

HEPA FILTER REPLACEMENT

In order to maintain the best air purification effect, this device will tell you when the HEPA filter is in need of replacement. The red indicator replacement filter light (as shown on page 8) will begin to flash when the filter needs to be replaced. If you want this logo to stop flashing, press and hold the **AI PURIFICATION** button for three seconds.

CHILD LOCK

Press and hold both the **INCREASE TIMER** and **DECREASE TIMER** buttons for three seconds to place the unit in **CHILD LOCK** state. In this state, all buttons will be invalid and the fan will stay in the desired mode set before child lock. To release **CHILD LOCK**, press and hold the **INCREASE TIMER** and **DECREASE TIMER** buttons for another three seconds.

Other Functions

POWER MEMORY

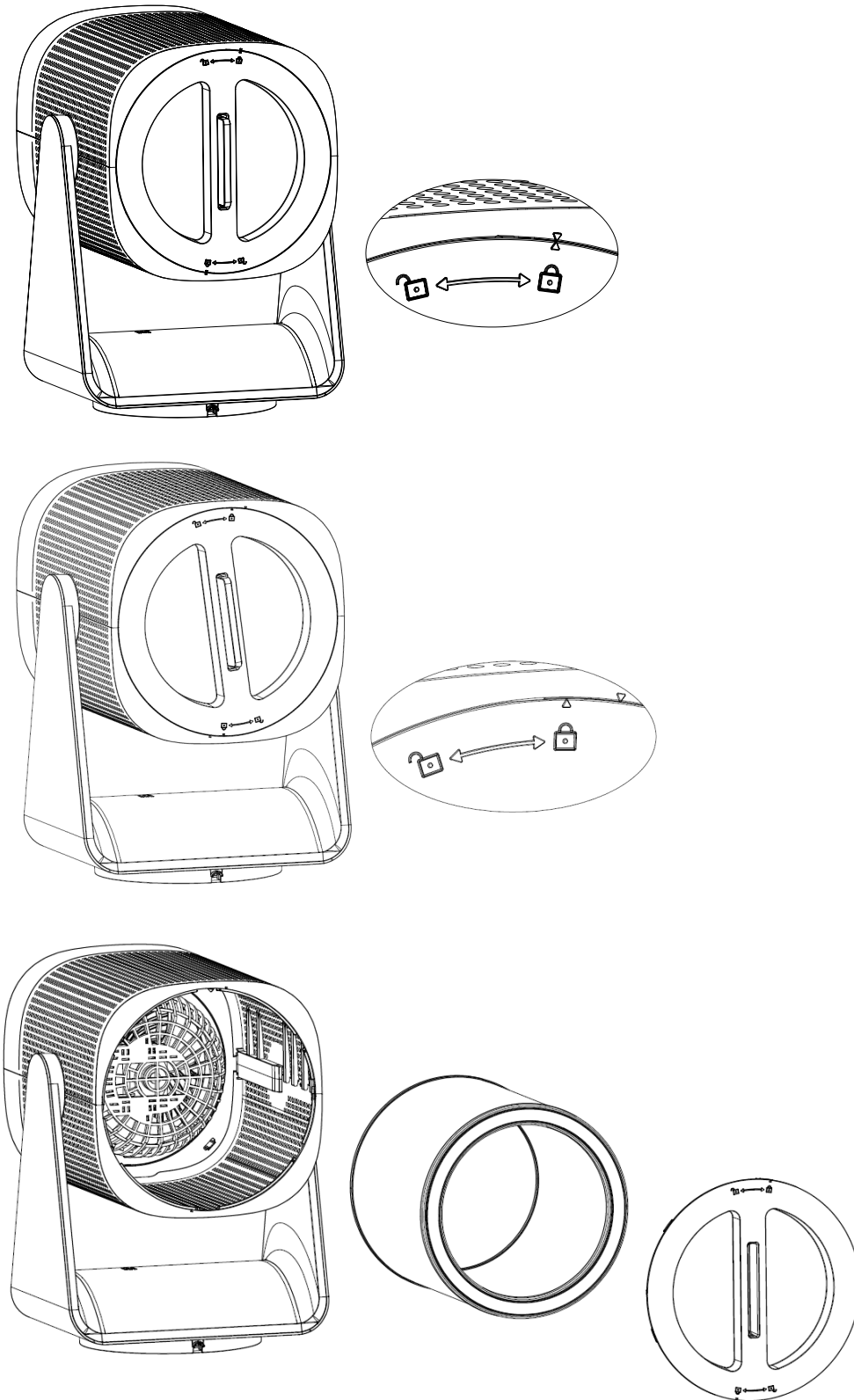
If it is not the first time the fan has been switched on, it will remember the mode it was running in (except for the timer) before it was switched off. After you press the **ON/OFF** button to switch the device on, it will automatically start to run in the state it was on previous to switching off.

AUTOMATIC SHUTDOWN

If there is no timer set, the device will automatically shut down after 15 hours of continuous use.

HEPA Filter Installation

1. As per shown below, the back cover is locked when the small triangle is aligned to the 'lock symbol.' To unlock the back cover, rotate the back cover counter clockwise approximately 8 degrees or so the small triangle is more aligned to the 'unlock symbol.'
2. Remove the back cover and place the filter inside the unit. Place the back cover back onto the device and lock again as per the instructions above.



Cleaning

Over time, dust can accumulate on the grille covers, filter (if applicable) and fan blades, which can affect the fans performance. It is recommended to clean the fan at least once a month.

1. Turn the unit OFF and disconnect the appliance from the power supply.
2. Remove any dust build up with a soft brush.
3. Wipe the surface of the unit with a soft damp cloth. Mild detergent can be used for any stubborn marks.

IMPORTANT

The control panel and other parts must not come into contact with water or any other liquids.

Storage

If not using the unit for an extended period of time. After cleaning please:

- Turn the unit off, unplug and take care of the mains lead & plug.
- Cover the unit and store it upright in a location where it will not receive direct sunlight. NB- Prolonged exposure to direct sunlight will discolour the outer casing.

Maintenance

If the unit fails to operate efficiently, is broken or other problems arise, unplug and do not operate. Ask for advice by calling your local after sales service agent or the Customer Care Centre on 1300 556 816 (AU) / 0800 666 2824 (NZ).

Warranty

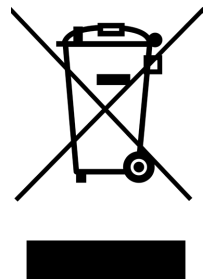
Please refer to the warranty card in the box for warranty information. For any troubleshooting advice, please contact the relative Customer Care Centre below.

Glen Dimplex Australia Pty Ltd

8 Lakeview Drive,
Scoresby 3179, Victoria
Australia
Ph: 1300 556 816

Glen Dimplex New Zealand Ltd

38 Harris Road, East Tamaki,
Auckland 2013
New Zealand
Ph: 0800 666 2824



Recycling: Do not dispose of electrical appliances as unsorted municipal waste. Use separate collection facilities. Contact your local government for information regarding the collection systems available. If electrical appliances are disposed of in landfills or dumps, hazardous substances can leak into the ground water, polluting the food chain and damaging health and well-being.



Customer Care: 1300 556 816
customer.care@glendimplex.com.au
www.dimplex.com.au

Supplied by Glen Dimplex Australia
8 Lakeview Drive, Scoresby, Victoria, 3179

© Glen Dimplex Australia. All rights reserved. Material contained in this publication may not be reproduced in whole or in part, without prior permission in writing of Glen Dimplex Australia.

DCACP23 V1